



# NORTHSTAR

MOUNTAIN VILLAGE  
& ALPINE CLUB

KIMBERLEY BC CANADA

## THE MAVERICK 1834 SQ FT 3 BEDROOMS, 3 BATH

**ENTRY** - 437 SQ FT

**MAIN** - 710 SQ FT

**UPPER** - 687 SQ FT

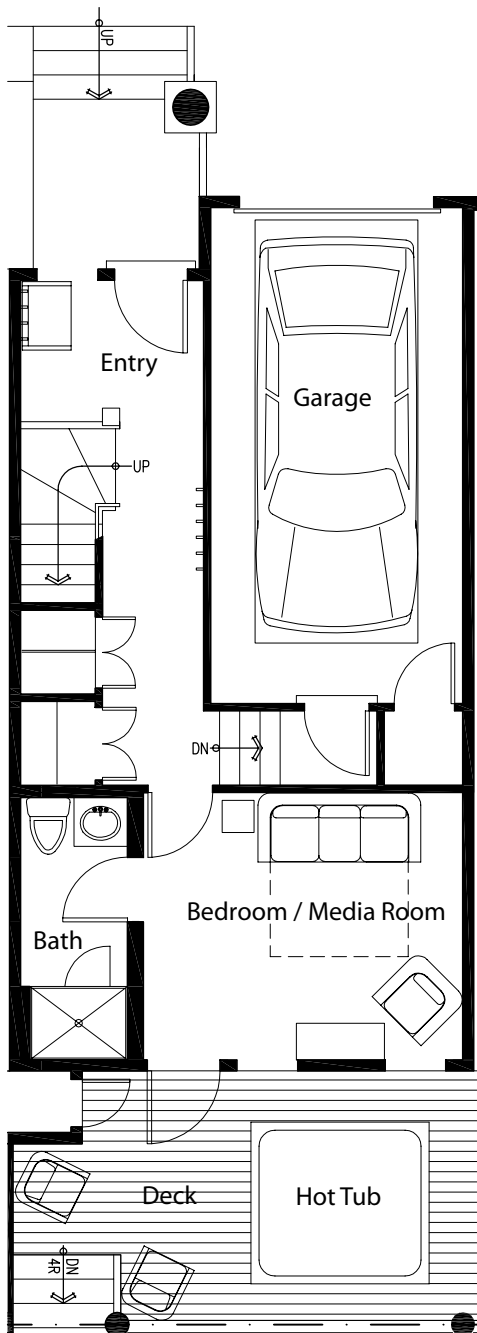
**DECKS**

entry - 196

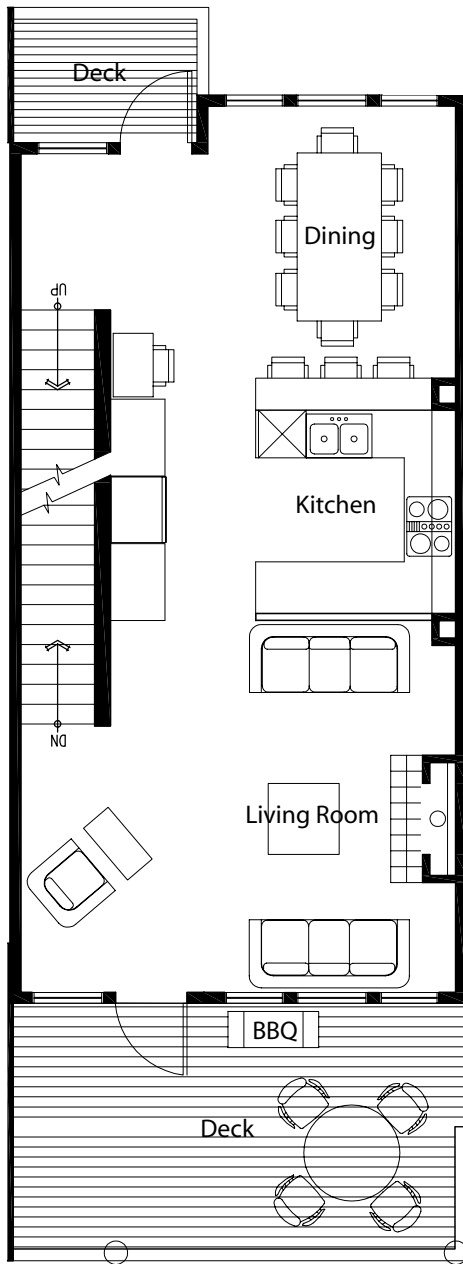
main - 206

dining - 40

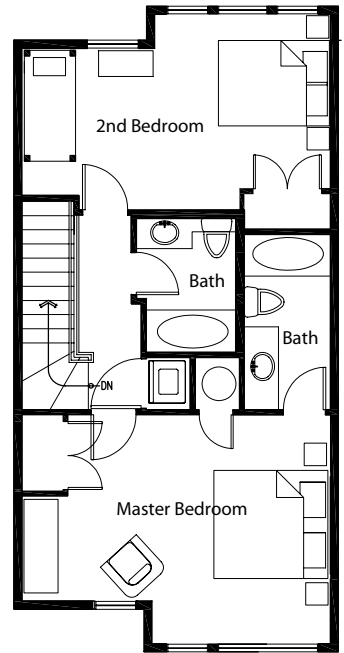
442



**ENTRY**



**MAIN**



**UPPER**

**NOTES:**

---

---

---

---

---



# NORTHSTAR

MOUNTAIN VILLAGE  
& ALPINE CLUB

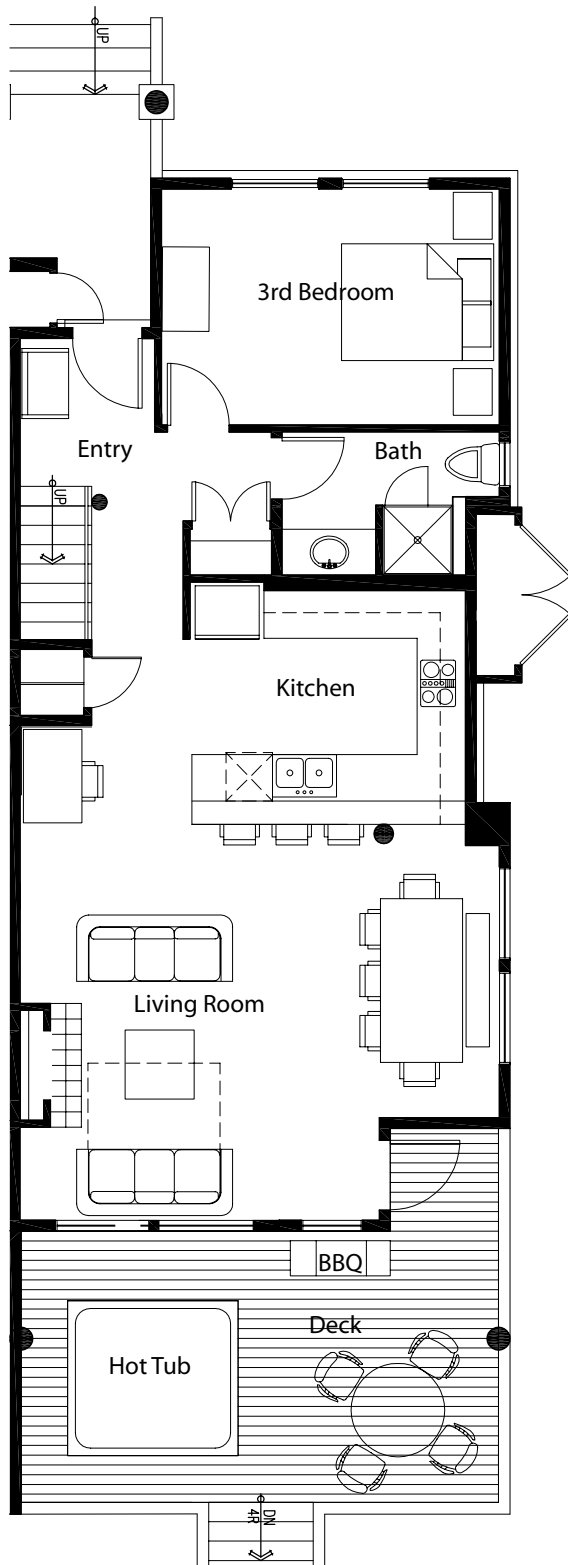
KIMBERLEY BC CANADA

## THE TAMARACK 1610 SQ FT 3 BEDROOM, 3 BATH

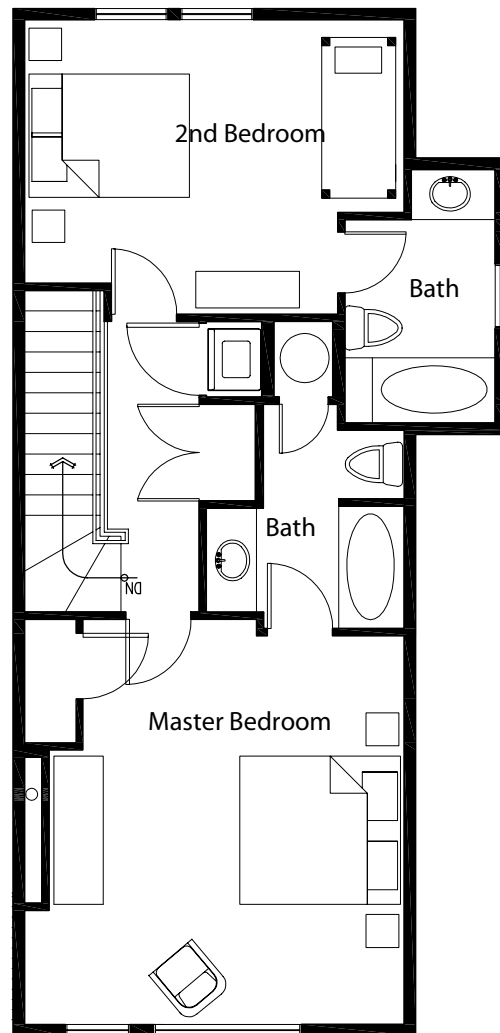
**ENTRY** - 888 SQ FT

**UPPER** - 722 SQ FT

**DECK**  
main - 282



**ENTRY**



**UPPER**

**NOTES:**

---

---

---

---

---